

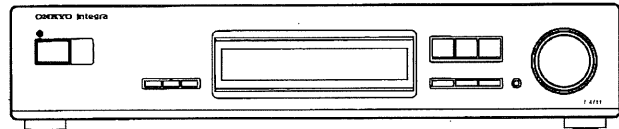
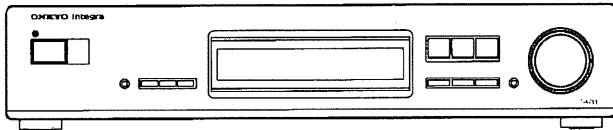
# ONKYO®

# T-4711

## FM Stereo / AM Tuner FM Stereo Tuner

All models except European models  
(FM Stereo / AM Tuner)

European model  
(FM Stereo Tuner)



## Instruction Manual

### CONTENTS

Features.....	2
Important safeguards .....	3
Precautions.....	3
Before using this unit.....	4
System connections .....	5
Antenna connections.....	6
Control positions and names.....	8
Connecting the power.....	9
Receiving stations .....	10
Receiving RDS .....	13
Entering characters .....	15
Setting the clock .....	16
Using the timer (for remote control only).....	18
Specifications.....	20
Troubleshooting guide.....	20

# Thank you

 for your purchase of the Onkyo T-4711 Tuner.

Please read this manual thoroughly before making connections and turning power on.

Following the instructions in this manual will enable you to obtain optimum performance and listening enjoyment from your new Tuner.

Please retain this manual for future reference.

## Features

- RDS (AF, PS, PTY, TP, RT, CT, TA)
- 40 FM Random presets / 4 Groups
- 3 Modes APR (Auto Precision Reception) → IF Band, High Blend, Mode
- 4 Groups Memory
- Dial Tuning Knob
- FM Cable with 25kHz step Tuning
- 10-Segment Signal Strength Bar
- 4 Mode Timer Function (Once, WeekDay, WeekEnd, Sleep)
- ACCUCLOCK
- RI Remote Compatible

### Remarks:

FM & AM available (For USA, Canada and Asia market)

FM only (For Europe market)

### FOR CANADIAN MODEL: (POUR LE MODELE CANADIEN)

• For models having a power cord with a polarized plug.  
**CAUTION:** TO PREVENT ELECTRIC SHOCK, MATCH WIDE BLADE OF PLUG TO WIDE SLOT, FULLY INSERT.

• Sur les modèles dont la fiche est polarisée.  
**ATTENTION:** POUR ÉVITER LES CHOCs ÉLECTRIQUES, INTRODUIRE LA LAME LA PLUS LARGE DE LA FICHE DANS LA BORNE CORRESPONDANTE DE LA PRISE ET POUSSER JUSQU'AU FOND.

### Memory Preservation

This unit does not require memory preservation batteries. A built-in memory power back-up system preserves the contents of the memory during power failures and even when the unit is unplugged. The unit must be plugged in order to charge the back-up system.

The memory preservation period after the unit has been unplugged varies depending on climate and placement of the unit. On the average, memory contents are protected over a period of a few weeks after the last time the unit has been unplugged. This period is shorter when the unit is exposed to a highly humid climate.

### Declaration of Conformity

We, ONKYO EUROPE  
ELECTRONICS GMBH  
INDUSTRIESTRASSE 18/20  
82110 GERMERING,  
GERMANY

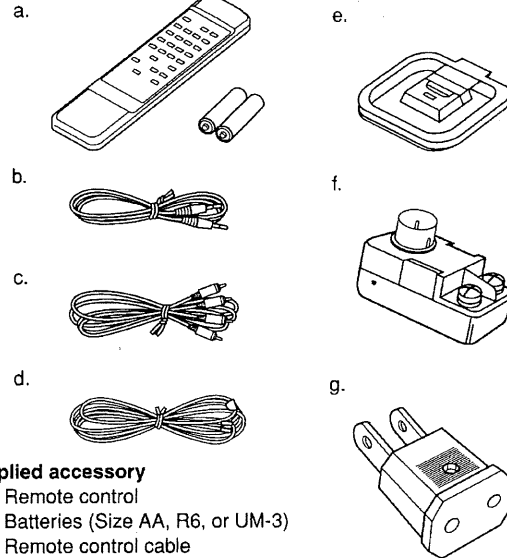


declare in own responsibility, that the ONKYO product described in this instruction manual is in compliance with the corresponding technical standards such as EN55013, EN55020, EN60555-2, EN60065

GERMERING, GERMANY

H. YAMAZOE

ONKYO EUROPE ELECTRONICS GMBH



### Supplied accessory

- a. 1 Remote control
- 2 Batteries (Size AA, R6, or UM-3)
- b. 1 Remote control cable
- c. 1 Audio connection cable
- d. 1 T-shaped FM antenna
- e. 1 AM loop antenna (For models other than European models)
- f. 1 75/300 ohm antenna adaptor (For models other than European models)
- g. 1 Conversion plug (Worldwide model only)



### CAUTION

RISK OF ELECTRIC SHOCK  
DO NOT OPEN



- The lightning flash with arrowhead symbol, within an equilateral triangle, is intended to alert the user to the presence of uninsulated "dangerous voltage" within the product's enclosure that may be of sufficient magnitude to constitute a risk of electric shock to persons.
- The exclamation point within an equilateral triangle is intended to alert the user to the presence of important operating and maintenance (servicing) instructions in the literature accompanying the product.

### "WARNING"

"TO REDUCE THE RISK OF FIRE OR ELECTRIC SHOCK, DO NOT EXPOSE THIS APPLIANCE TO RAIN OR MOISTURE."

### CAUTION:

"TO REDUCE THE RISK OF ELECTRIC SHOCK, DO NOT REMOVE COVER (OR BACK). NO USER-SERVICEABLE PARTS INSIDE. REFER SERVICING TO QUALIFIED SERVICE PERSONNEL."

# Important safeguards

1. **Read Instructions** – All the safety and operating instructions should be read before the appliance is operated.
2. **Retain Instructions** – The safety and operating instructions should be retained for future reference.
3. **Heed Warnings** – All warnings on the appliance and in the operating instructions should be adhered to.
4. **Follow Instructions** – All operating and use instructions should be followed.
5. **Water and Moisture** – The appliance should not be used near water – for example, near a bathtub, washbowl, kitchen sink, laundry tub, in a wet basement, or near a swimming pool, and the like.
6. **Carts and Stands** – The appliance should be used only with a cart or stand that is recommended by the manufacturer.

6A. An appliance and cart combination should be moved with care. Quick stops, excessive force, and uneven surfaces may cause the appliance and cart combination to overturn.



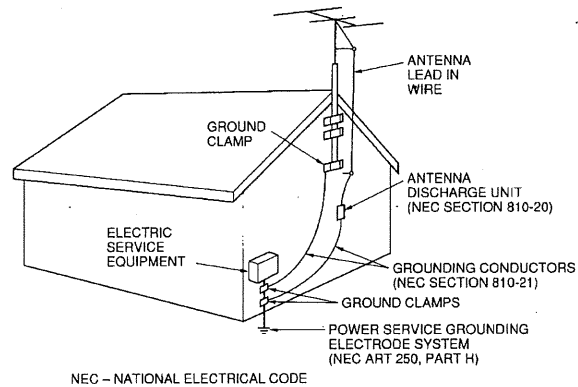
7. **Wall or Ceiling Mounting** – The appliance should be mounted to a wall or ceiling only as recommended by the manufacturer.
8. **Ventilation** – The appliance should be situated so that its location or position does not interfere with its proper ventilation. For example, the appliance should not be situated on a bed, sofa, rug, or similar surface that may block the ventilation openings; or if placed in a built-in installation, such as a book case or cabinet that may impede the flow of air through the ventilation openings, there should be free space of at least 20 cm and open up behind the appliance.

**Heat** – The appliance should be situated away from heat sources such as radiators, heat registers, stoves, or other appliances (including amplifiers) that produce heat.

10. **Power Sources** – The appliance should be connected to a power supply only of the type described in the operating instructions or as marked on the appliance.
11. **Polarization** – If the appliance is provided with a polarized plug having one blade wider than the other, please read the following information: The polarization of the plug is a safety feature. The polarized plug will only fit the outlet one way. If the plug does not fit fully into the outlet, try reversing it. If there is still trouble inserting it, the user should seek the services of a qualified electrician. Under no circumstances should the user attempt to defeat the polarization of the plug.
12. **Power-Cord Protection** – Power-supply cords should be routed so that they are not likely to be walked on or pinched by items placed upon or against them, especially near plugs, convenience receptacles, and the point where they exit from the appliance.
13. **Cleaning** – The appliance should be cleaned only as recommended by the manufacturer.
14. **Power Lines** – An outdoor antenna should be located away from power lines.
15. **Nonuse Periods** – The power cord of the appliance should be unplugged from the outlet when left unused for a long period of time.
16. **Object and Liquid Entry** – Care should be taken so that objects do not fall and liquids are not spilled into the enclosure through openings.
17. **Damage Requiring Service** – The appliance should be serviced by qualified service personnel when:
  - A. The power-supply cord or the plug has been damaged; or
  - B. Objects have fallen, or liquid has been spilled into the appliance; or
  - C. The appliance has been exposed to rain; or
  - D. The appliance does not appear to operate normally or exhibits a marked change in performance; or
  - E. The appliance has been dropped, or the enclosure damaged.

18. **Servicing** – The user should not attempt to service the appliance beyond that described in the operating instructions. All other servicing should be referred to qualified service personnel.
19. **Outdoor Antenna Grounding** – If an outside antenna is connected to the receiver, be sure the antenna system is grounded so as to provide some protection against voltage surges and built up static charges. Article 810 of the National Electrical Code, ANSI/NFPA 70, provides information with regard to proper grounding of the mast and supporting structure, grounding of the lead-in wire to an antenna discharge unit, size of grounding conductors, location of the antenna-discharge unit, connection to grounding electrodes, and requirements for the grounding electrode. See Figure 73.1.

**FIGURE 73.1:**  
**EXAMPLE OF ANTENNA GROUNDING AS PER NATIONAL ELECTRICAL CODE**



S2898A

## Precautions

### 1. Warranty Claim

You can find the serial number of the rear panel. In case of warranty claim, please report this number.

### 2. Care

From time to time you should wipe the front and rear panels and the cabinet with a soft cloth. For heavier dirt, dampen a soft cloth in a weak solution of mild detergent and water, wring it out dry, and wipe off the dirt. Following this, dry immediately with a clean cloth. Do not use rough material, thinners, alcohol or other chemical solvents or cloths since these could damage the finish or remove the panel lettering.

### 3. Power WARNING

**BEFORE PLUGGING IN THE UNIT FOR THE FIRST TIME, READ THE FOLLOWING SECTION CAREFULLY.**

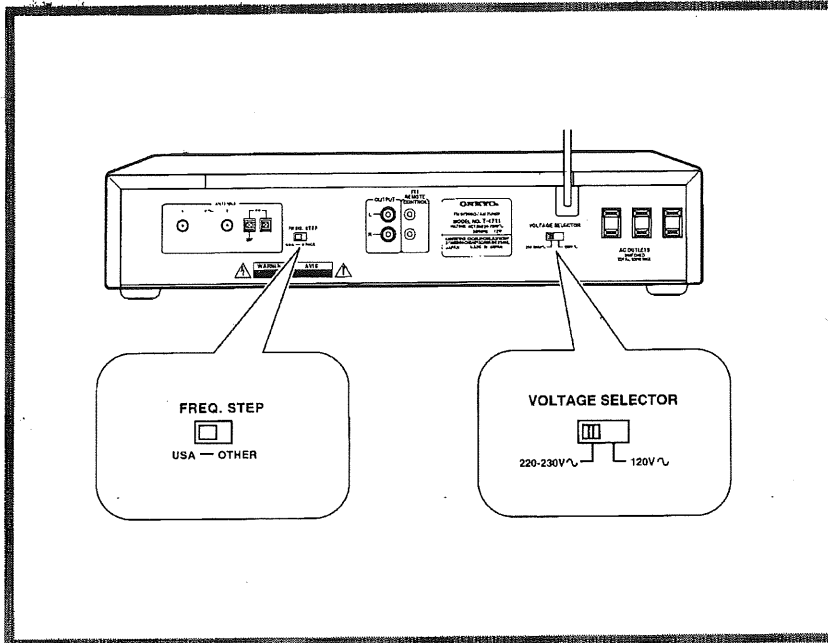
- Some models are designed for use only with the power supply voltage of the region where they are sold.

U.S.A. and Canadian models:	AC 120 V, 60 Hz
European model:	AC 230 V, 50 Hz
Worldwide model:	AC 120 V/220 – 230 V switchable, 50/60 Hz

- **Voltage Selector (Rear Panel)**

Worldwide models are equipped with a voltage selector to conform with local power supplies. Be sure to set this switch to match the voltage of the power supply in your area before turning the power button on. (See "Setting the voltage selector and Tuning step frequency (Worldwide models only)", P. 4.) Models without a voltage selector can only be used in areas where the power supply is the same as that of the unit.

# Before using this unit



## Setting the voltage selector and Tuning step frequency (Worldwide models only)

### Voltage selector

1. Determine the proper voltage for your area: 220 – 230 V or 120 V.
2. If the preset voltage is not correct for your area, insert a screwdriver into the groove in the switch. Slide the switch all the way to the right (120 V) or to the left (220 – 230 V), whichever is appropriate.

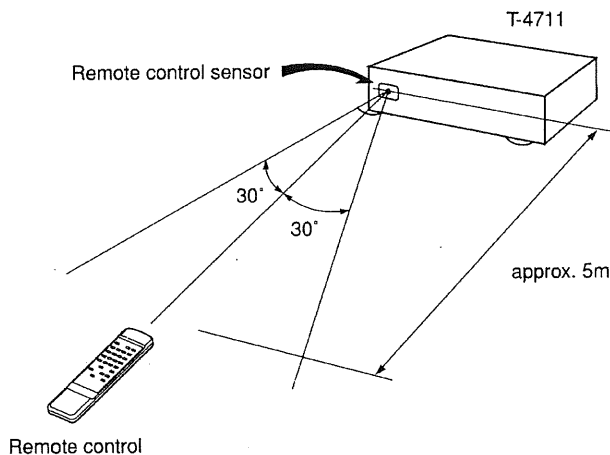
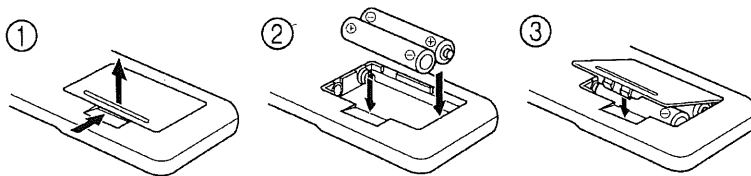
### Tuning step frequency

Worldwide models are equipped with a switch that controls the AM (9 kHz/10 kHz) and FM (50 kHz/200 kHz) bands tuning steps. Please set this switch to match the tuning step frequency in your area.

U.S.A. : AM 10 kHz, FM 200 kHz  
(25 kHz, Fine mode)

Other areas : AM 9 kHz, FM 50 kHz  
(25 kHz, Fine mode)

Please insert the batteries into the remote control according to the illustration.



## Inserting the remote control batteries

Remove the battery compartment cover by opening it as shown in the illustration. Load three R6 (UM-3) AA size batteries into the remote control with the plus (+) and minus (-) terminals positioned as indicated by the diagram inside the battery compartment and close the cover.

- Remove dead batteries immediately to avoid corrosion damage.
- To avoid potential corrosion damage, never mix old batteries with new ones.
- The manganese batteries supplied with this unit have a service life of approximately six months, depending on frequency of usage.
- This unit comes equipped with R6 (UM-3) AA manganese batteries, but we recommend that long-life alkaline batteries LR6 (AM-3) AA be used when replacing the batteries.

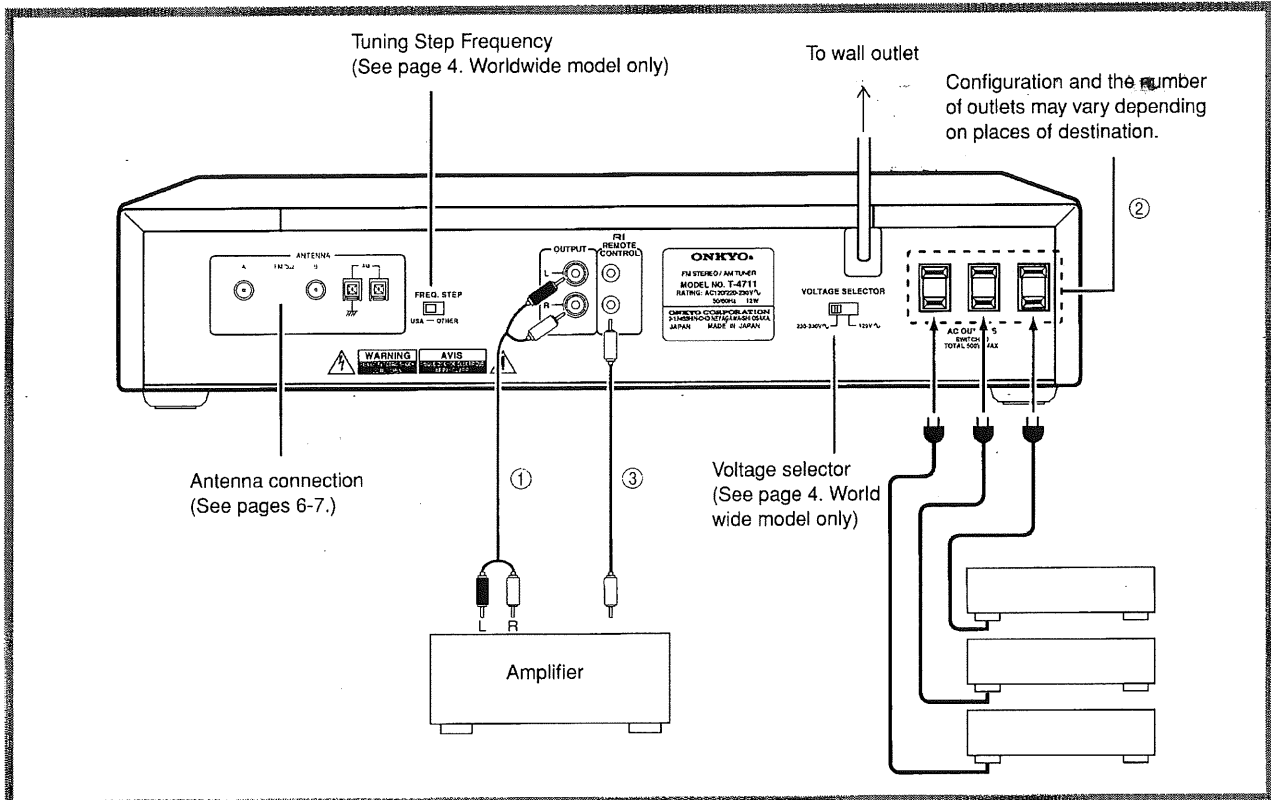
## Using the remote control

The following information will help you get optimum use from the remote control.

- Place this unit away from direct bright light, which can prevent proper operation of the remote control.
- Make sure audio rack doors do not have coloured glass. If this unit is placed behind such a door, this may prevent proper remote control operation.
- Using other remote controls in the same room as this unit remote control may cause interference.

# System connections

- Do not plug in the power cord until all connections have been made.
- On each pair of input or output jacks, the lower jack (marked R) corresponds to the right channel, and the upper jack (marked L) to the left channel.



## ① Connecting the amplifier:

Connect the tuner's OUTPUT jacks and the amplifier's INPUT jacks using the audio connection cable. Refer to the amplifier's instruction manual for connections.

## ② AC outlets (SWITCHED)

The shape, orientation, the number and total capacity of the AC outlets may differ according to the model and the area where the unit is purchased. Be careful that other components connected to this unit do not exceed the capacity that is printed on the rear panel below under the AC outlets.

When connecting other Integra series components (such as the A-9911/9711, DX-7911/7711 or TA-6711), connect the power cords of those components to this unit's AC outlets.

The unit may be turned ON or OFF according to the setting of POWER button, ON or OFF, respectively.

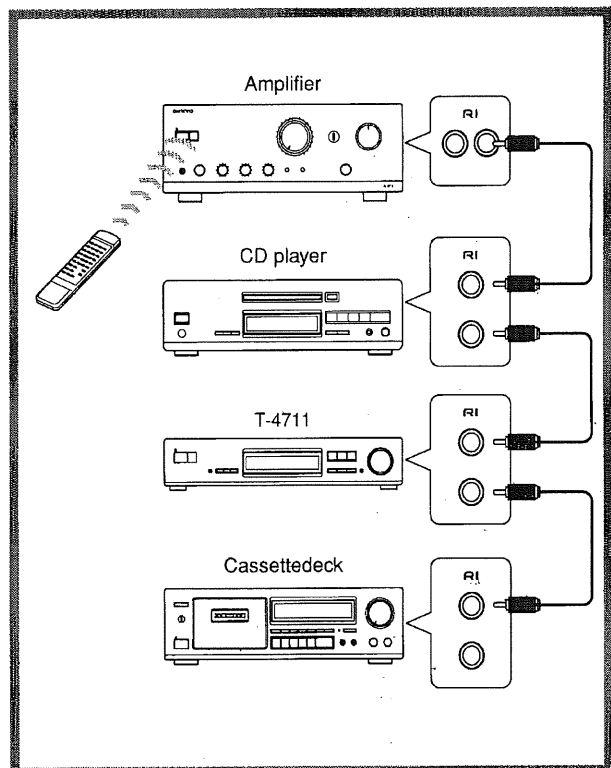
When this unit is used as a timer, the other components that will be switched on and off should be connected to this unit's AC outlets.

## ③ Connections for remote control

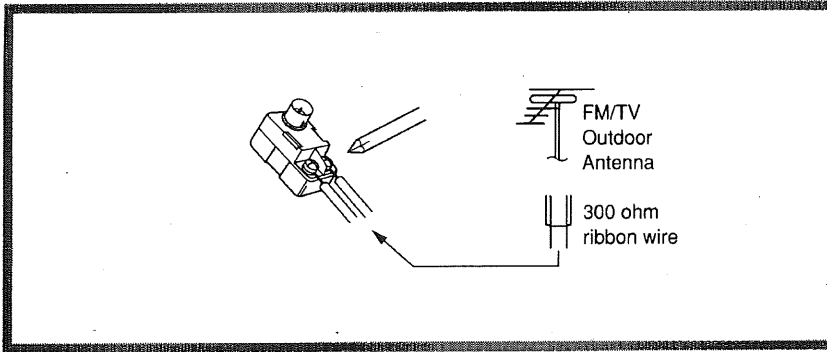
When this is connected to an amplifier with the Onkyo RI jack, you are able to operate it by pressing the TUNER buttons on the amplifier's supplied remote control.

## NOTE:

An RI remote control cable equipped with a 1/8" (3.5 mm) diameter miniature two-conductor phone plug is included with this unit and with every compact disc player and cassette deck with the RI mark.

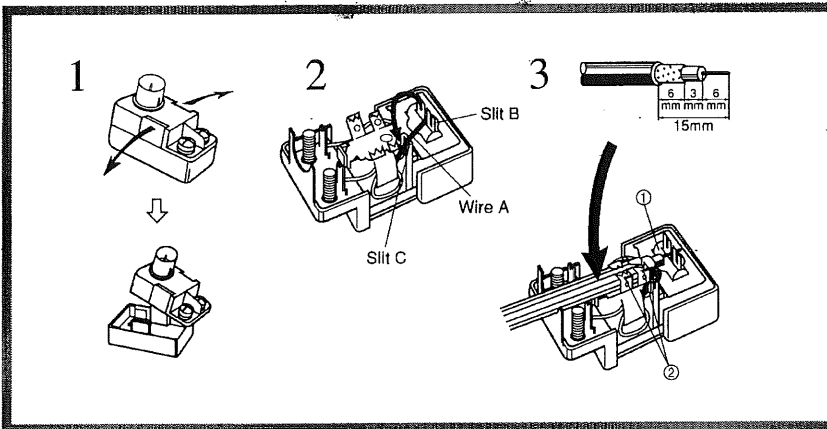


# Antenna connections



## Connecting the 300 ohm ribbon wire to the 75/300 ohm adaptor (for models other than European models)

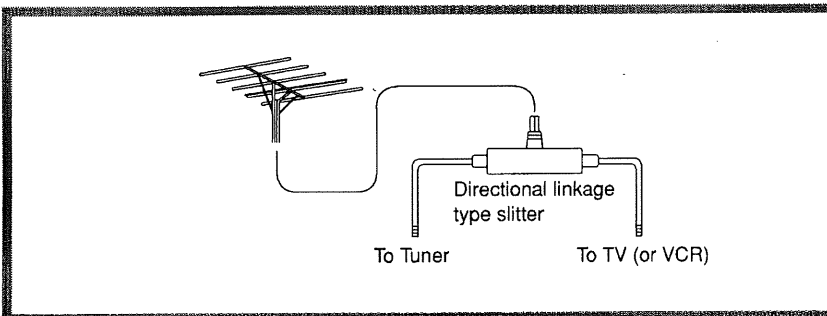
Loosen the screws and wrap the wire around these screws. Then tighten the screw with a screwdriver.



## Connecting the coaxial cable to the 75/300 ohm adaptor (for models other than European models)

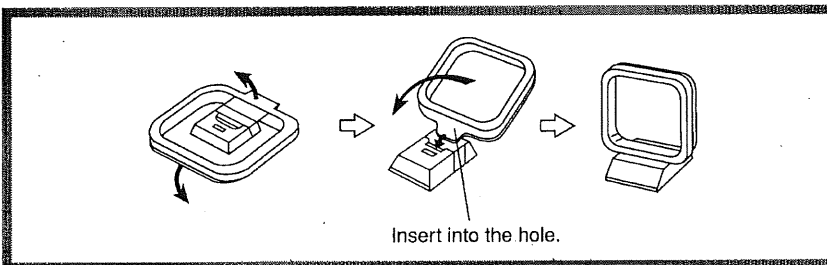
1. With your fingernail or a small screwdriver, press the stoppers outwards and remove the cover.
2. Remove the transformer wire A from slit B and insert it into slit C.
3. Prepare the coaxial cable as shown in the diagram. Connect the 75/300 ohm antenna adaptor to the coaxial cable.

- ① Insert the end of the cable.
- ② Clamp it in place with pliers.



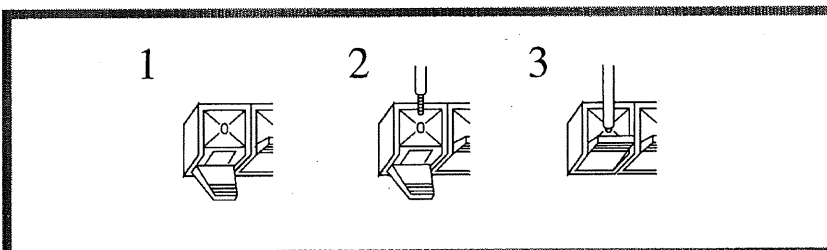
## Directional linkage

Do not use the same antenna for both FM and TV (or VCR) reception since the FM and TV (or VCR) signals can interfere with each other. If you must use a common FM/TV (or VCR) antenna, use a directional linkage type splitter.



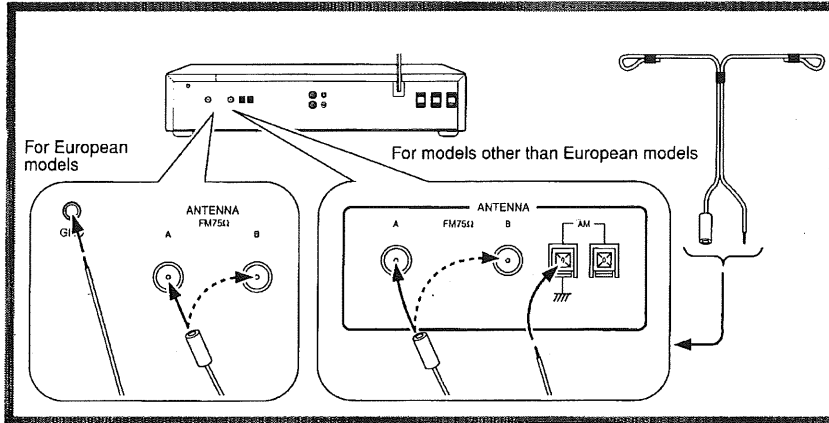
## Assembling the AM loop antenna

Assemble the loop antenna as shown in the illustration.



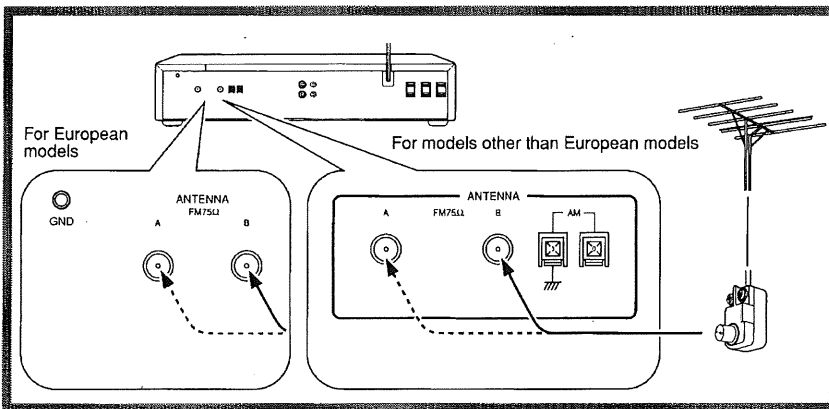
## Connecting the antenna cable

1. Press down the lever.
2. Insert wire.
3. Return the lever.



### Connecting the enclosed T-shaped FM antenna

The T-shaped FM antenna is for indoor use only. Extend the antenna and move it in various directions until the clearest signal is received. Fix it with push pins or similar in the position giving the least amount of distortion.

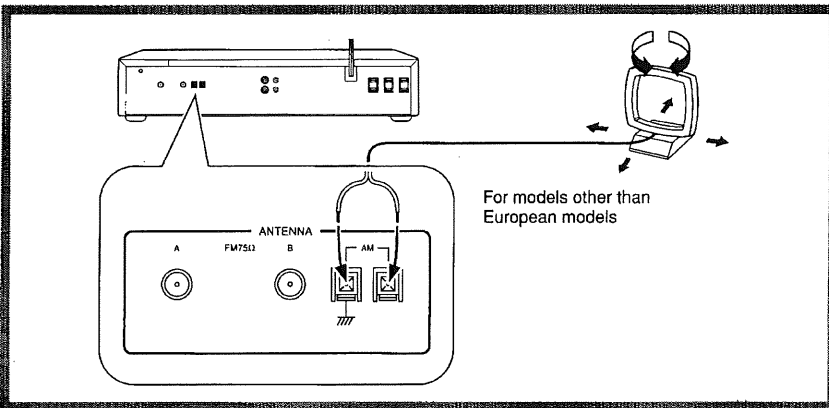


### Connecting an FM outdoor antenna

If the reception is not very clear with the attached T-shaped FM antenna, the use of an external antenna is recommended. Please make sure that you comply with the following considerations regarding the location.

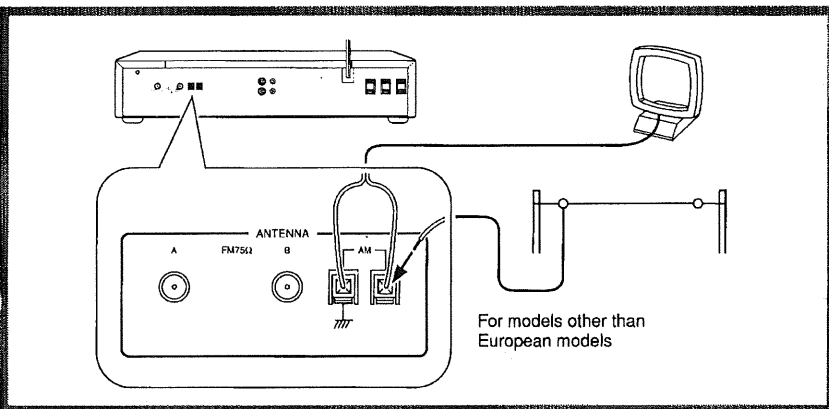
Keep the antenna away from noise sources (neon signs, busy roads etc.)

It is dangerous to put it close to power lines, so keep it well away from power lines, etc.



### Connecting the enclosed AM loop antenna (For models other than European models)

The AM loop antenna is for indoor use only. Set in the direction and position where you receive the clearest sound. Put it as far as possible away from the main unit, TV set, speaker cables and power cord.



### Connecting an AM outdoor antenna (For models other than European models)

When reception is not satisfactory by the use of the attached AM loop antenna alone, connection of the external antenna is recommended. (Do not remove the AM loop antenna)

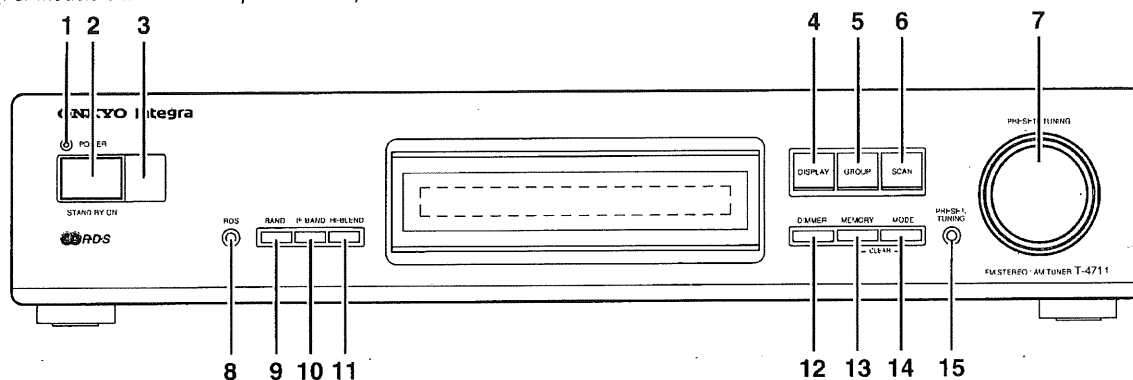
The external antenna will be more effective if you stretch it horizontally in a high place above a window or outside.

# Control positions and names

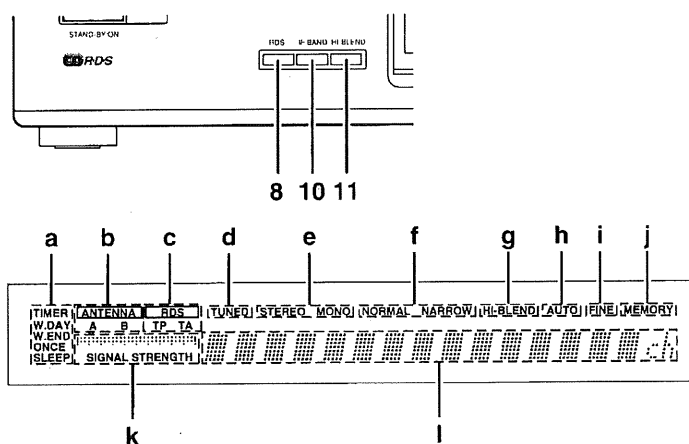
## Front Panel

The button positions may differ slightly depending on the country of purchase.

(For models other than European models)



(For European models)



### NOTE:

If there is a protective film on the surface of the display, which is making it difficult to read the display, remove it.  
For more information about buttons, turn to the page number in the [ ].

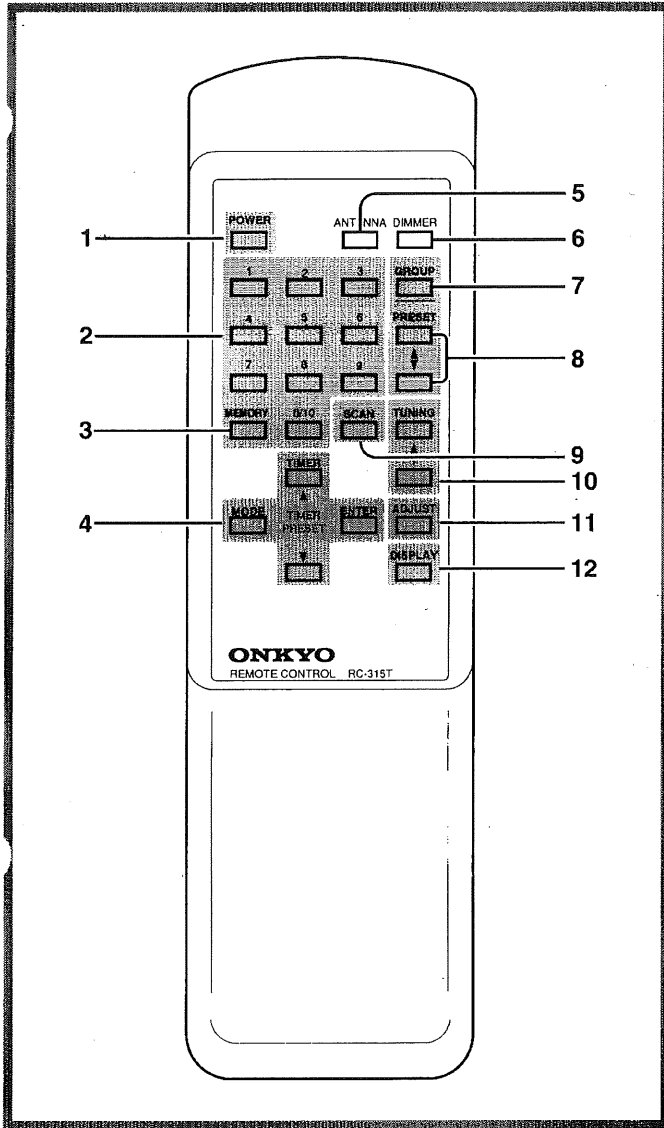
## Front Panel

1. Power Indicator
2. Power Button (POWER) [9, 18]
3. Remote Control Sensor [4]
4. Display Button (DISPLAY) [12, 14]
5. Group Button (GROUP) [10, 11]
6. Scan Button (SCAN) [13, 14]
7. Preset/Tuning Dial (PRESET/TUNING) [10, 11, 15]
8. RDS Button (RDS) [13, 14]
9. Band Selector Button (BAND) [10]  
(\* Not available on the European model)
10. IF Bandwidth Selector Button (IF BAND) [12]
11. Hi-Blend Selector Button (HI-BLEND) [12]
12. Dimmer Button (DIMMER) [11]
13. Memory Button (MEMORY) [10, 11, 15]
14. Mode Button (MODE) [11, 12, 15, 18, 19]
15. Preset/Tuning Button (PRESET/TUNING) [10, 11, 15]

## The display and indicator

- a. Timer Mode Indicators
- b. Antenna Indicators
- c. RDS Indicators
- d. Tuned Indicator
- e. Stereo/Mono Indicator
- f. IF-Bandwidth Indicator
- g. Hi-Blend Indicator
- h. Auto Tuning Indicator
- i. Fine Tuning Indicator
- j. Memory Indicator
- k. Signal strength level Display
- l. Multi Display

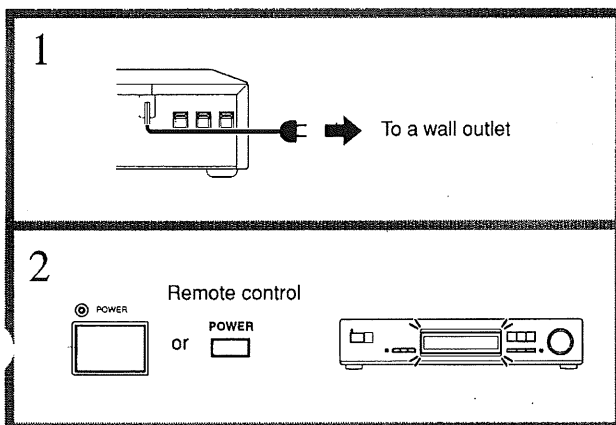




### Remote control

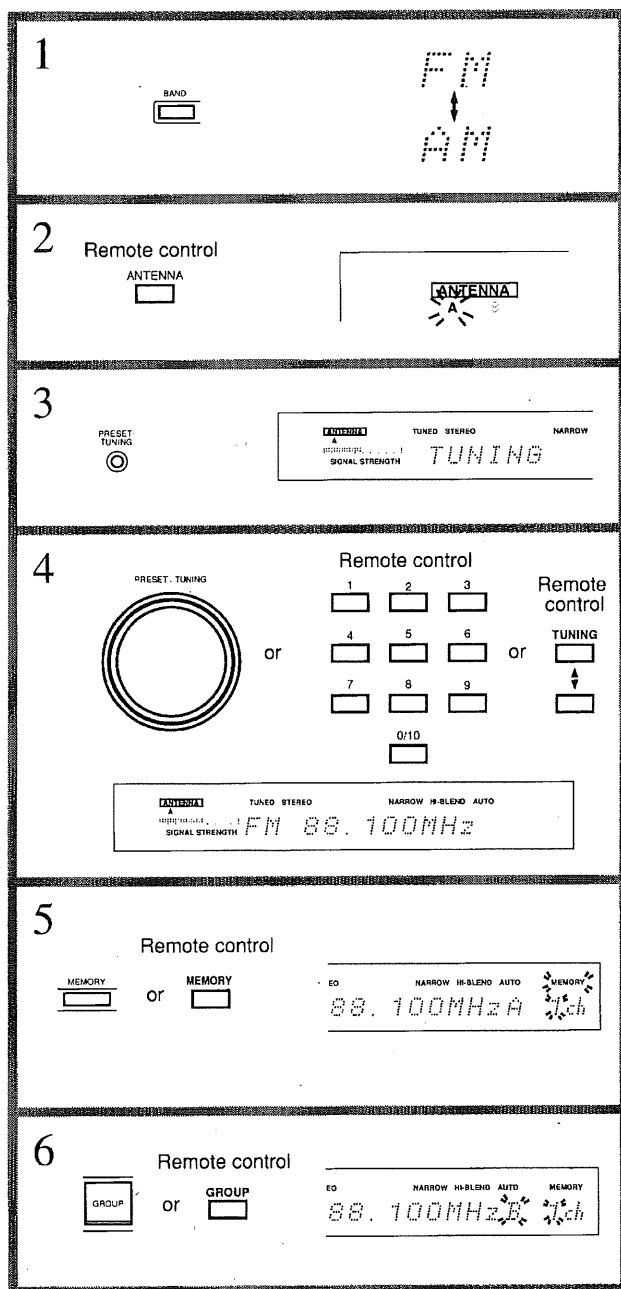
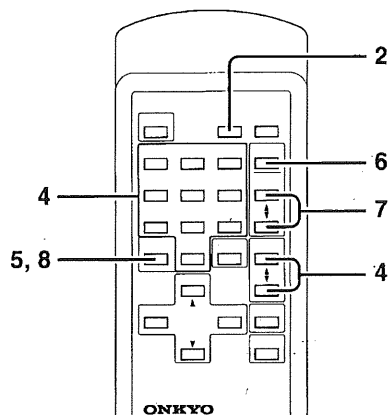
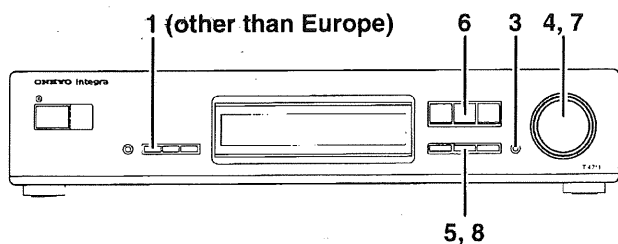
1. Power Button (POWER) [9, 18]
2. Number Buttons (1 ~ 9, 0/10) [10, 17]
3. Memory Button (MEMORY) [10, 11, 15]
4. Timer preset Buttons (TIMER PRESET) [16, 17, 18]
5. Antenna Selector Button (ANTENNA) [10, 12]
6. Dimmer Button (DIMMER) [11]
7. Group Button (GROUP) [10, 11]
8. Preset memory up/down Buttons (PRESET ▲/▼) [11]
9. Scan Button (SCAN) [13, 14]
10. Tuning up/down Buttons (TUNING ▲/▼) [10]
11. Adjust Button (ADJUST) [16, 17]
12. Display Button (DISPLAY) [12, 14]

## Connecting the power



1. Insert the AC power supply cord into a wall outlet.  
"0:00" flashes.
2. When you press the POWER button, the display will light.

# Receiving stations



In order to listen to a radio broadcast, first tune in the radio station, then set it. The radio station can be selected in two ways: by using the auto-tuning function or by directly entering the station's frequency. When tuning in the radio station, refer to page 12 for more information on how to get the best reception possible.

## Tuning the radio and presetting stations

- (For models other than European models) Use the BAND button to select either FM or AM.
- (When selecting an FM station) Use the ANTENNA button on the remote control to select the antenna.
- Press the PRESET/TUNING button until Tuning Mode is selected.
  - With each press of the button, the mode changes one at a time in the following sequence:

→ PRESET → TUNING → CHARACTER →

Continue pressing the PRESET/TUNING button until "TUNING" appears on the display.

- When using the remote control, press the TUNING ▲/▼ buttons.
- Tune in the station.**

**To tune in a station using the PRESET/TUNING dial:**  
Turn the PRESET/TUNING dial either clockwise or counterclockwise to begin auto-tuning. Once a station is tuned in, auto-tuning will stop. When using the remote control, hold down the TUNING ▲ or ▼ button for more than 0.5 second to begin auto-tuning.

    - To select another station, turn the PRESET/TUNING dial again and the next station will be tuned in.
    - If the station's frequency is weak and auto-tuning is not able to tune it in, refer to page 12.

**To tune in a station by directly entering the station's frequency:**  
Use the number buttons to enter the station's frequency.

    - For example, if the station frequency is 88.10 MHz, press 8 twice, then press 1, and then 0.
    - If no radio station can be received at the entered frequency, the unit will decrease the frequency until the station nearest to the entered frequency is received.
    - If you have accidentally entered the wrong frequency, try entering the correct frequency again.

- Press the MEMORY button. The MEMORY indicator will light up and the number of an available preset channel will flash on the display.
- Use the GROUP buttons to select the group in which you wish to preset the station.  
You can select from A, B, C or D.

(Continued on page 11)